

how it works

The fixture program features three components:

BASE
BRACELET BAR
CARD TRAY

The base has three ledges, which hold earring and charm cards. Ledges can also be used to attach a bracelet bar or card tray.

Depending on the collections you're featuring, you may opt to use the base only, or add a bracelet bar and/or card tray. This allows endless combinations with one fixture, and gives you the freedom to easily swap out merchandise and display configurations as your Lenny & Eva offering changes.

The base cost is \$65, and each attachment is \$30.

The display base measures 15.75" w x 14.5" H x 5.75" D

1 start with a base

● Holds 21 earrings/charms



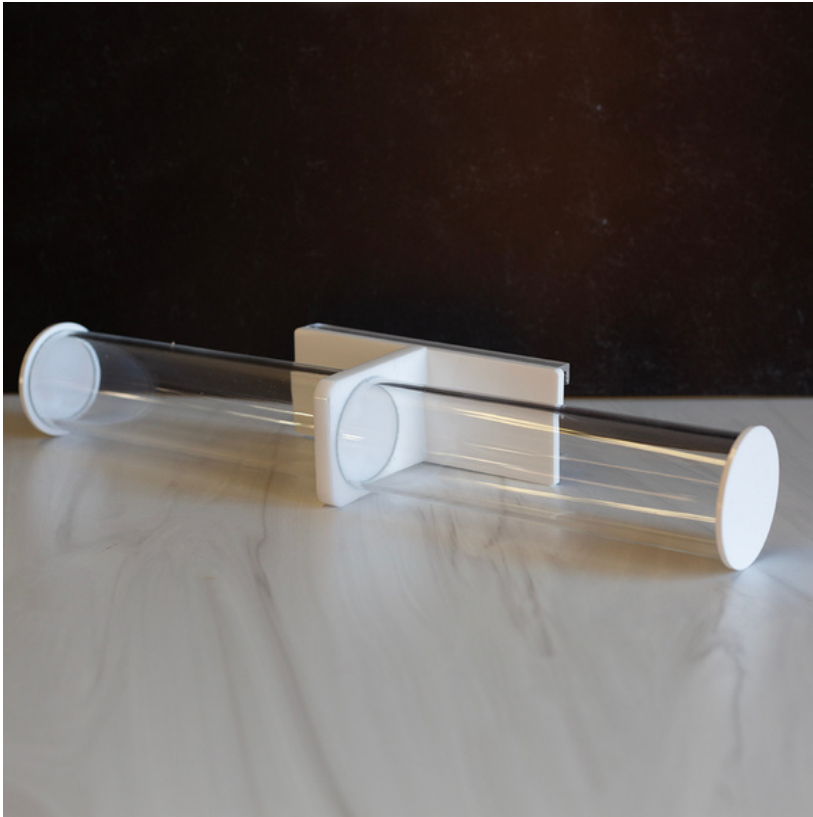
RECOMMENDED COLLECTIONS

- CHARMED
- ALL EARRINGS



2 add a bracelet bar

- Holds 14 earrings/charms + bangles or stretch bracelets



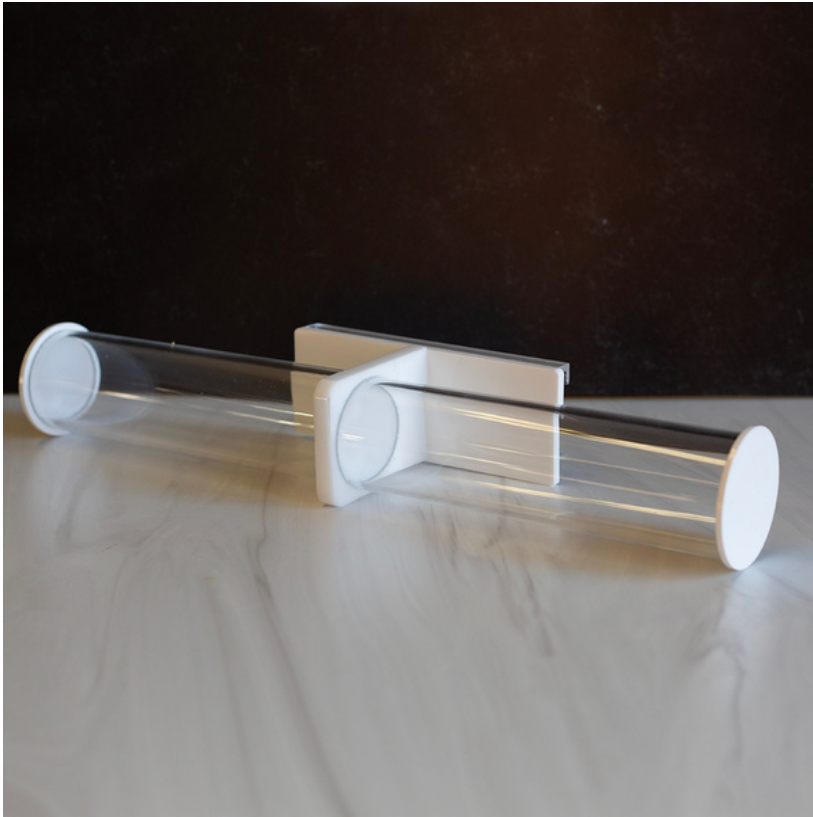
RECOMMENDED COLLECTIONS

- NORAH EARRINGS+BANGLES
- CONFETTI EARRINGS+BANGLES
- FAITHFUL EARRINGS+BANGLES
- SPRINKLES EARRINGS+BANGLES



3. add multiple bars

- Holds 7 earrings/charms + bangles or stretch bracelets



RECOMMENDED COLLECTIONS

- CORE GEMS + EARRINGS



4 add trays

- Each tray holds 8 carded items



RECOMMENDED COLLECTIONS

- SYMBOLIC STONES
- INTENTIONS
- REMINDERS
- FRIENDSHIP



5 • mix it up!

Swap out bars and trays to create fresh presentations as your inventory changes.

